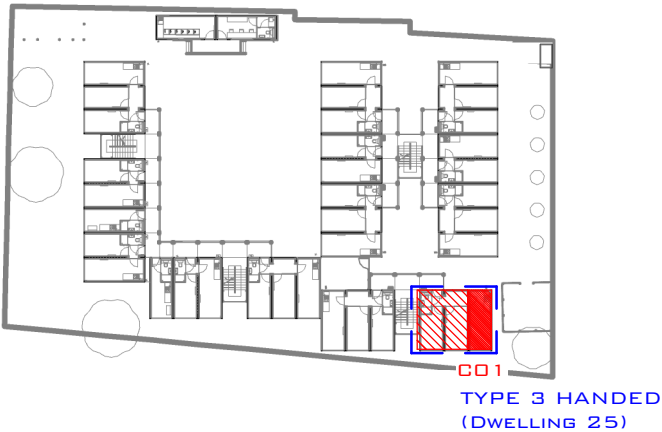


CONTAINER REF: CO1 - (DWELLING 25)

- TYPE 03 HANDED UNIT
- INTERNAL DOOR TYPE 02, LEFT HUNG, FD30
- REAR WINDOW TYPE 02, CLADDING PANEL COLOUR RAL 5012
- PARTY WALL ON LEFT HAND
- EXTERNAL LEFT HAND PAINTED RAL 7016, ANTHRACITE GREY
- KITCHEN RIGHT HAND SINK
- FRONT AND REAR OF CONTAINER AND ALL STEEL PLATES TO BE PAINTED RAL 7016, ANTHRACITE GREY
- ADDITIONAL PLATE WELDED TO FLANK FOR EXTERNAL LIGHT
- INTERNAL WELDED PLATES AND CAPTIVE NUTS TO TAKE WALKWAY BRACKET TO FRONT ELEVATION
- REFER TO ELEVATIONS FOR CUT OUT DIMENSIONS
- THESE DRAWINGS ARE TO SHOW THE UNIT TYPE POSITION AND ANY INDIVIDUAL ITEMS. THESE ARE NOT TO BE USED FOR CONSTRUCTION. FOR CONSTRUCTION DETAILS PLEASE SEE THE RELEVANT PLANS, SECTIONS AND DETAILS.

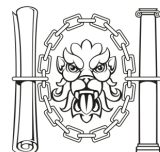
--- . --- PARTY WALL SIDE



GROUND FLOOR
BLOCK C

REV	B	02.10.17	HOB HANDED	RS	RS	RS
	A	25.07.17	WELDED PLATES TO FLANK UPDATED/ DIMENSIONS ADDED	AG	RS	RS
DATE			REVISION	DRAWN	CHECKED	APPROVED

CONSTRUCTION

SCALE: NOT TO BE SCALED	CLIENT: CARGOTEK	PROJECT: HOPE GARDENS	TITLE: CO1 UNIT DATA SHEET - TYPE 03 HANDED - GROUND FLOOR - BLOCK C	<div>CITYZEN</div> <div>ARCHITECTURE ENVIRONMENT</div> <div>MARITIME HOUSE BASIN ROAD NORTH HOVE EAST SUSSEX BN41 1WR</div> <div>CONTACT@CITYZENDESIGN.CO.UK WWW.CITYZENDESIGN.CO.UK 01273 704 901</div> <div> Chartered Institute of Architectural Technologists Registered Practice</div>	
	DESIGNER: ROMAN SCHNECKER	©COPYRIGHT CITYZEN LIMITED		DATE: 21.07.17	DRAWING: PROJECT REF - DRG NO. (REVISION) 1705 - CR - 1101 - (B)